



veriplate

VeriPlate® ALPR Interface

Securing Communities - Saving Lives.



The VeriPlate Automated License Plate Recognition (ALPR) System

The key to a successful system is the ease with which it can be incorporated into the normal day-to-day operations. VeriPlate was designed with an intuitive user interface and requires a minimal amount of training for effective use. The system is optimized to work with your in-vehicle laptop to reduce clutter and seamlessly integrate with existing systems.

Snapshot of all recognized plates, allowing you to quickly scroll through a list of recent vehicles.

Display choices let you show live video and still images, as well as updating images per recognition, searching plates and more.

List of alerts lets you quickly skip to vehicles of interest.

Easily compare the selected plate image to the recognized plate number, view the lane, image and toggle video in one area.

With the push of a single button, only "Live Check" instantly validates an ALERT with NCIC, state and local hotlists.

Manual entry allows the officers to check tags not in the VeriPlate camera's field of view.

MapMe® instantly pinpoints your location.

MapIt® displays the location of the currently selected vehicle.

Hotlist Sync allows hotlists to be automatically and efficiently updated to each mobile unit. Instead of downloading entire lists, only the latest updates are communicated.

Common Misread Information System (CMIS) suggests the right plate number in the case of a misread.



continued...

NDI Recognition Systems

725 West S.R. 434 Suite E
Longwood, FL 32750

Tel: 866-458-0426 Fax: 321-441-1801

Web: www.ndi-rs.com Email: sales@ndi-rs.net



NDI Recognition Systems

9700 Research Drive Suite 136
Charlotte, NC 28262

Tel: 866-458-0426 Fax: 321-441-1801

Web: www.ndi-rs.com Email: sales@ndi-rs.net

VeriPlate Alert Notifications

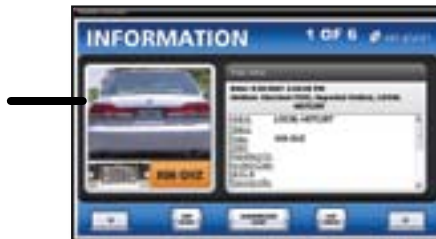
The VeriPlate Alert system has been designed to sit in the background, allowing the normal CAD screens to facilitate standard patrol operations. A match of a license plate against any of several hotlists will generate an alert screen with an audible warning to alert officers of a vehicle of interest. VeriPlate offers multiple alert types with optional alert delivery methodologies. Be sure to ask one of our sales consultants to review these options with you.

Quickly edit a plate number in case of a misread.



Do an instant live verification to ensure the alert still applies to this vehicle.

Sometimes you need information that doesn't qualify as an alert.



Get notified when vehicles are added to the local hotlist.



VeriPlate Processor

Typically mounted in the trunk of the vehicle, the VeriPlate processor is the heart of the ALPR system. Hardened to withstand the extreme environments encountered with vehicular use, the processor is designed to endure harsh temperatures, vibrations and power fluctuations.

The VeriPlate processor is loaded with NDI Recognition Systems' ALPR software. It is connected to the VeriPlate cameras and to a touch-screen monitor or existing Mobile Data Terminal (MDT) in the front of the vehicle. From the touch screen, the user can review previous plate reads, view alerts, verify results, manually enter a plate, add new plates to the hotlist and configure system settings.

VeriPlate Cameras

Each VeriPlate camera is actually a pod consisting of two high-speed, ultra-sensitive cameras. The first, a black-and-white infrared camera, is used to read the license plate text, day or night, regardless of lighting conditions. The second camera takes a high-resolution color overview picture of the vehicles.

VeriPlate cameras are lensed and positioned for reading the plates of vehicles that are parked, parallel parked or moving in both directions in traffic.

NDI Recognition Systems

725 West S.R. 434 Suite E
Longwood, FL 32750

Tel: 866-458-0426 Fax: 321-441-1801

Web: www.ndi-rs.com Email: sales@ndi-rs.net



NDI Recognition Systems

9700 Research Drive Suite 136
Charlotte, NC 28262

Tel: 866-458-0426 Fax: 321-441-1801

Web: www.ndi-rs.com Email: sales@ndi-rs.net